



## **RFDS response to Horizontal Falls Mass Casualty Incident**

Dr Sally Edmonds, Flight Nurses Rachel Climpson and Natalie Saunders  
'Critical care in the air – critical care anywhere'



Royal Flying Doctor Service  
WESTERN AUSTRALIA





## Falls Express

c/o Horizontal Falls Seaplane Adventures



Royal Flying Doctor Service  
WESTERN AUSTRALIA





# Horizontal Falls and surrounds

Buccaneer Archipelago, WA



Royal Flying Doctor Service  
WESTERN AUSTRALIA



## Horizontal Falls Pontoon

c/o Horizontal Falls Seaplane Adventures

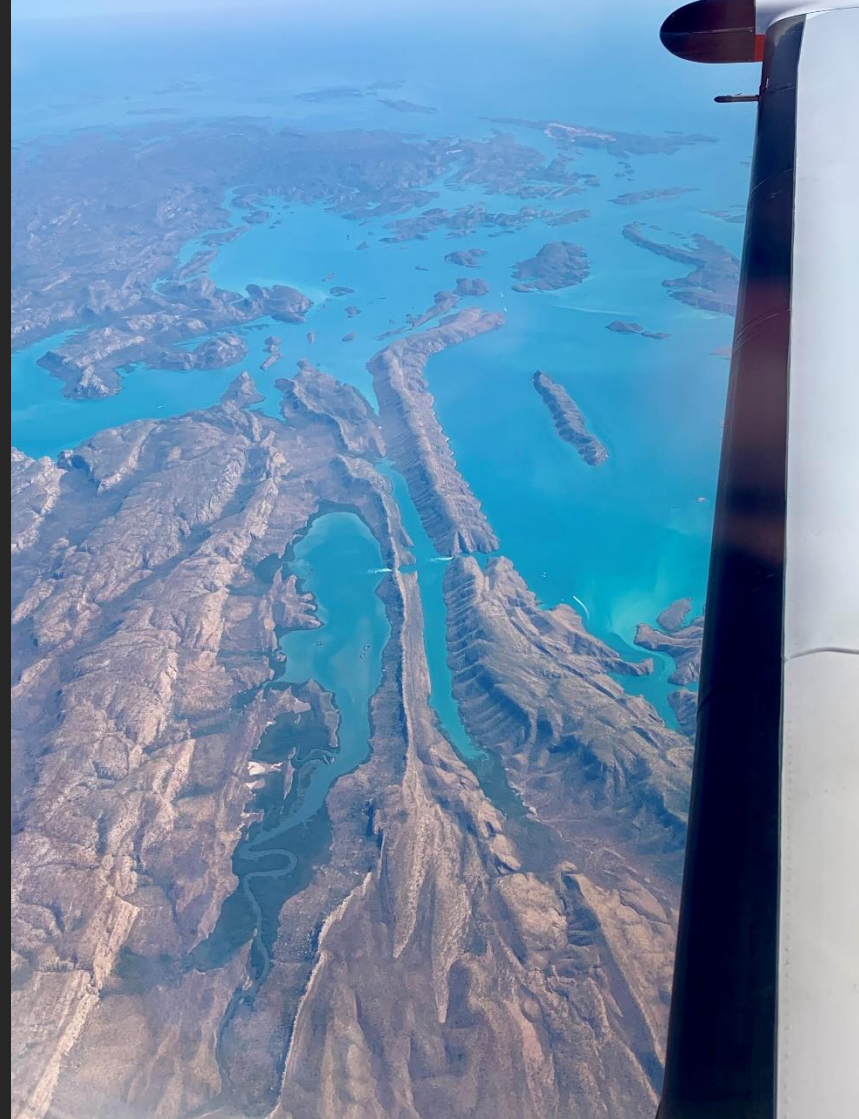


Royal Flying Doctor Service  
WESTERN AUSTRALIA





Royal Flying Doctor Service  
WESTERN AUSTRALIA



## Horizontal Falls and surrounds

Buccaneer Archipelago, WA



Royal Flying Doctor Service  
WESTERN AUSTRALIA





## Horizontal Falls Pontoon



Royal Flying Doctor Service  
WESTERN AUSTRALIA





**Seaplane loaded and ready to move**



Royal Flying Doctor Service  
WESTERN AUSTRALIA





**3x RFDS PC-24 jets on Koolan Island**





# Koolan Island and surrounds

Buccaneer Archipelago, WA



Royal Flying Doctor Service  
WESTERN AUSTRALIA





## Repurposed tourist seaplanes

2 stretcher patients, 2 sitting patients, medical escort.



Royal Flying Doctor Service  
WESTERN AUSTRALIA





# Unloading seaplane

Koolan Island



Royal Flying Doctor Service  
WESTERN AUSTRALIA





## Koolan Island passenger terminal





## 28 casualties in total

### From the Pontoon

11 walking wounded via seaplane direct from pontoon to Broome

13 injured via seaplane to Koolan Island for staging

2 injured via charter helicopter to Koolan for staging

2 injured via Rescue Helicopter direct to Broome from pontoon

### From Koolan Island staging area

10 direct to Perth via RFDS Jet from Koolan Island staging post

5 via RFDS fixed wing to Broome from Koolan Island staging post

*3 requiring secondary transfer from Broome to Perth in the following days*



Royal Flying Doctor Service

WESTERN AUSTRALIA





**The PC-12 turboprop**



**Rio Tinto LifeFlight PC-24 jets**

## **Our aeromedical fleet**

The PC-12 turboprop and Rio Tinto LifeFlight PC-24 jet



**Royal Flying Doctor Service**  
WESTERN AUSTRALIA





Royal Flying Doctor Service  
WESTERN AUSTRALIA





Royal Flying Doctor Service  
WESTERN AUSTRALIA





Royal Flying Doctor Service  
WESTERN AUSTRALIA



**ADMINISTRATION MANUAL  
GOV6.5 MASS CASUALTY INCIDENT PLAN**



Policy Statement	RFDSWA has formal procedures in place to ensure we work effectively in partnership with the state government and emergency services to coordinate government and private aeromedical services in a mass casualty event.
Document Purpose	To describe the structure, expectations and requirements of the Mass Casualty Response process within RFDSWA.
Related Policies Related manuals, policies, procedures and forms	ADM3.1 Crisis Response and Business Continuity Policy ADM3.2 Crisis Response Plan ADM3.3 Business Continuity Plans ADM3.4 Cyclone Plan Federation – Multi-Section Communication Protocol
References	<i>The Australasian Inter Service Incident Management System</i> , Australasian Fire and Emergency Service Authorities Council, 4 <sup>th</sup> Edition 2013. <i>State Health Emergency Response Plan</i> (WA Department of Health) <i>WA Health Mass Casualty Aeromedical Transport Plan</i> (Sub plan of above)

**Contents**

1. PURPOSE ..... 2

2. DEFINITION OF A MASS CASUALTY INCIDENT ..... 2

3. INCIDENT PHASE DEFINITIONS ..... 2

4. COMMUNICATION MECHANISMS ..... 2

5. WEBEOC ..... 3

7. RFDS AS FIRST RESPONDERS ..... 3

8. MAINTAINING REGISTER OF AVAILABLE EXTERNAL AEROMEDICAL ASSETS ..... 4

9. TRACKING EXPENSES AND SUBMISSION TO WA HEALTH ..... 4

10. EQUIPMENT ..... 4







# RFDS 24-hour State-wide Coordination Centre

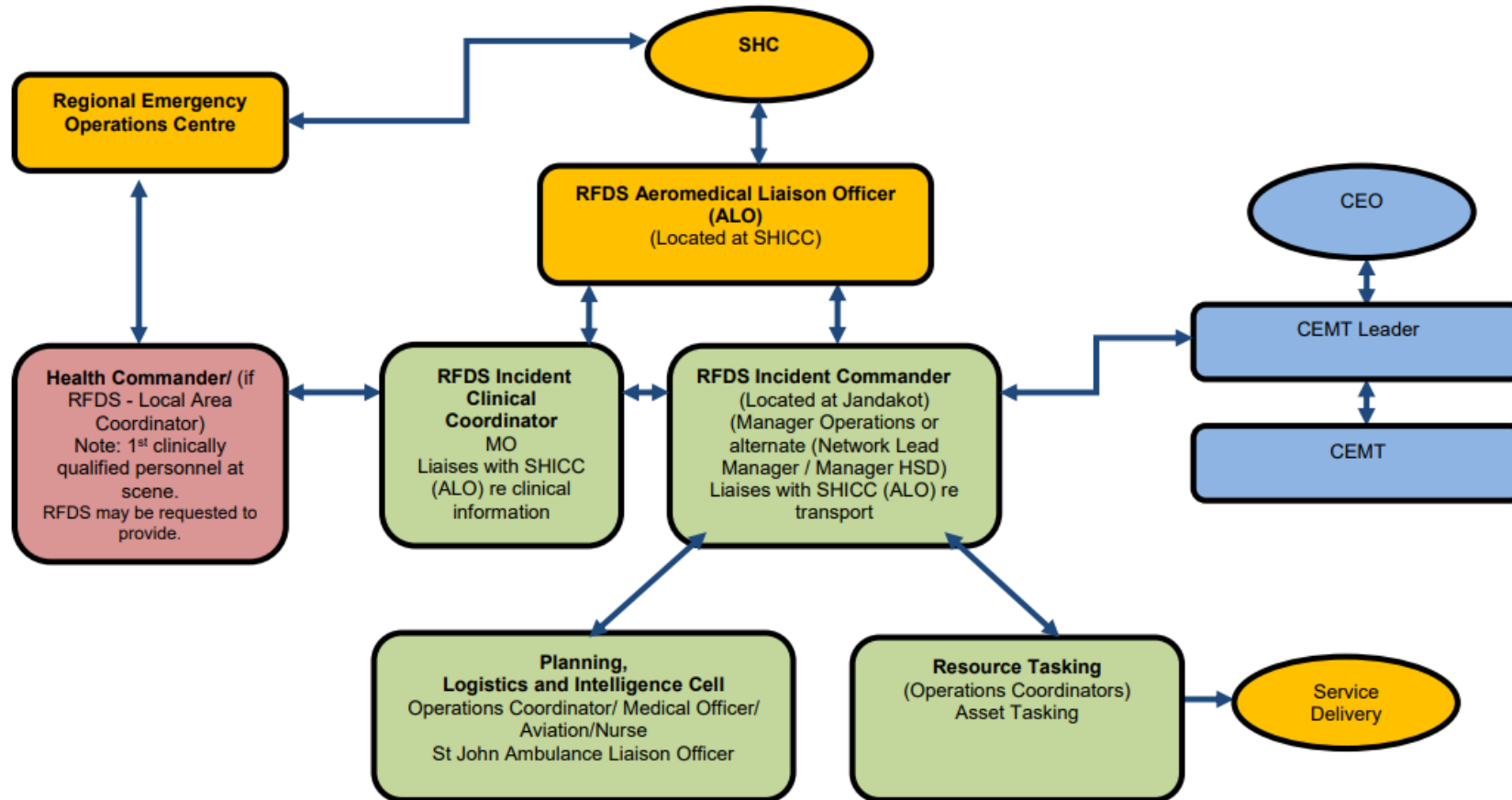
Jandakot, WA



Royal Flying Doctor Service  
WESTERN AUSTRALIA



13. RFDSWA MASS CASUALTY RESPONSE STRUCTURE RESPONSIBILITIES AND ROLES







**BREAKING**

# Boat accident at Horizontal Falls



Royal Flying Doctor Service  
WESTERN AUSTRALIA



Handwritten medical notes and a trauma chart on a corkboard. The notes include patient identifiers, dates, and clinical observations such as '15/11/57 NKA', '14/1/58', and '23/5/58'. Some notes mention 'open # lower leg' and 'possible open # ankle'. A central note lists '4) clavis', '2) patella bone on view', and '1) leg lac'. A lower note describes 'distorted @ shoulder pain - swelling @ thigh'. A trauma chart is visible, titled 'TRAUMA CHART' with fields for patient details, vital signs, and a body diagram.



Royal Flying Doctor Service  
WESTERN AUSTRALIA





Royal Flying Doctor Service  
WESTERN AUSTRALIA

# Reflection

Initial information received accurate & acted on immediately

Early naming of 'Mass Casualty Incident' to initiate statewide response

Many ways to undertake this retrieval

Being prepared but targeted in gathering extra equipment & setting up staging area

Making use of boat manifest, bystanders, improvisation with equipment, documentation & identification

Lateral thinking and improvisation goes a long way in an MCI



Royal Flying Doctor Service  
WESTERN AUSTRALIA





**Questions?**



Royal Flying Doctor Service  
WESTERN AUSTRALIA





**Thank You!**



Royal Flying Doctor Service  
WESTERN AUSTRALIA